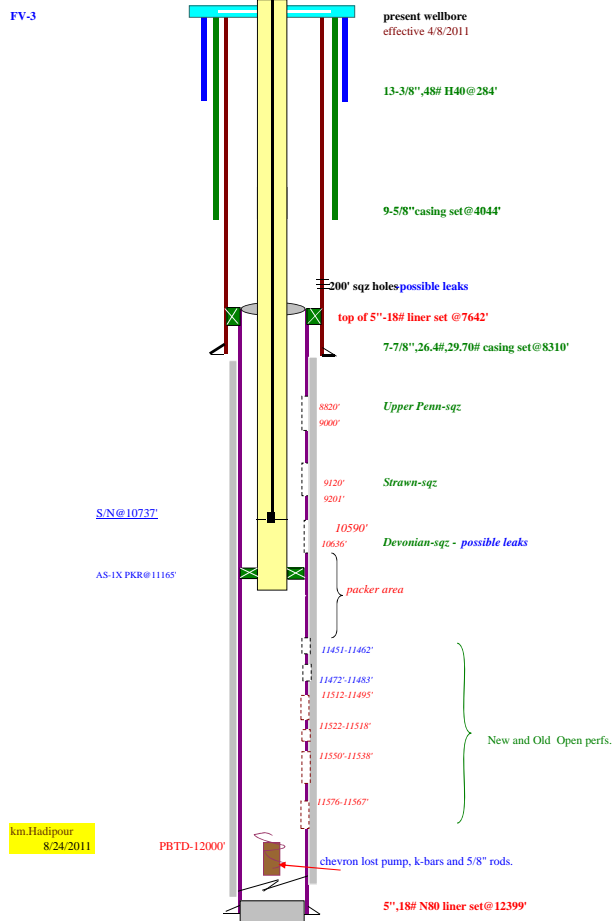




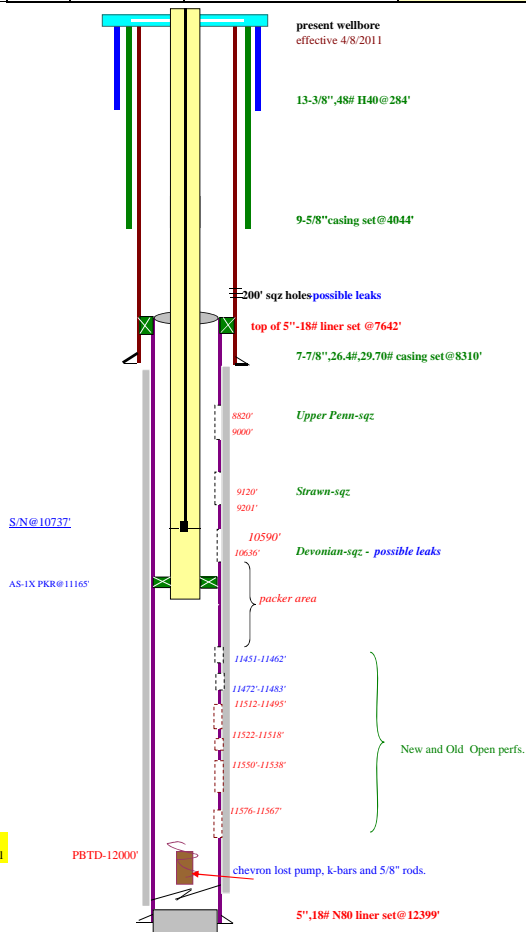


DATE: 8/31/2011		DAILY WORKOVER / COMPLETION REPORT				ISO	
WELL NAME & NO.				FIELD		TRIPLE "N"	
TRIPLE N.WELL#FV-3							
SEC.		TWP		RGE		COUNTY	STATE
						ANDREWS	TX
AFE NO.		W.I. 100%				GROSS AFE	
PO# N-14301 .....						\$40,000	
JOB DESCRIPTION				SUPPLEMENT 1			
PARTED RODS- Change OLD 3/4" EL RODS.				TOTAL GROSS AFE			
		SIZE		WT.		GRADE	
C		13-3/8"		48#		H-40	
S		9-5/8"				4,044	
G		7-7/8"		26.4# 29.7#		N80J-55	
T		LINER 5" OD		18#		L80	
B		2-7/8"		6.5#		L80	
G						11310.60'	
						SRD.	
PERFS:							
11576-67, 11550-38, 11522-18, 11512-1495'				ID	PSTD	PERFS	FORMATION
				12000'	12000'		
\$		VENDOR		PKR	S.N. @	EOT @	
				1175.85'-1182.45'	10737'	11165'	
LOCATION				WORK PERFORMED			
SERVICE RIG		3342	BASIC -A	Start Time: 7:00am Stop time: 6:30pm			
SUPERVISOR		600	HADI -B	OW, NO PRESSURE.			
3/4" RODS		Prod. specialty -C		3/4" STEEL SUCKER RODS ARRIVED ON LOCATION FROM PRODUCTION			
PUMP REPAIR		ANDREWS PUMP- D		SPECIALTY OF ANDREWS, TX.			
VAC TRUCK		BM VAC -E		UNLOADED 220-3/4" NORRIS 96 SUCKER RODS BY HAND & PLACED HIGH			
				ABOVE GROUND. CHK RODS, OK.			
				PRIMED INSERT PUMP, PU & GH WITH 2-1/2"X1-1/2"X22' OF INSERT PUMP			
				ON 8 K-BARS, 219-3/4" NEW NORRIS 96 RODS, AND 199-7/8" USED EL RODS.			
				TAGGED BOTTOM & SPACED OUT WITH 22' OF PONY RODS, & POLISHED ROD			
				SEATED PUMP WITH POLISHED RODS, AND HWOB.			
				VAC TRUCK FILLED UP TUBING WITH FRESH WATER, PUT WELL TO PUMPING.			
				CHECKED PUMP ACTION, OK.			
				INSTALLED FLOW LINE AND PUT WELL TO PRODUCTION.			
				WILL CHK PUMP ACTION, AND RIG DOWN TOMORROW.			
DAILY COST		3,942	AFE: \$40000	ACCIDENTS: -0-			
PRVIOUS COST		6,350		REPORT BY: HADI			
TOTAL COST		10,292	\$10,292	BASIC RIG: PHONE: 361-649-7340			



DATE: 9/1/2011		DAILY WORKOVER / COMPLETION REPORT				ISO	
WELL NAME & NO.				FIELD			
TRIPLE N.WELL#FV-3				TRIPLE "N"			
SEC.		TWP	RGE	COUNTY		STATE	
				ANDREWS		TX	
AFE NO.		W.I. 100%		GROSS AFE			
PO# N-14301 .....				\$40,000			
JOB DESCRIPTION				SUPPLEMENT 1			
PARTED RODS- Change OLD 3/4" EL RODS.				TOTAL GROSS AFE			
		SIZE	WT.	GRADE	DEPTH	THREAD	
C		13-3/8"	48#	H-40	284	ST&C	
S		9-5/8"			4,044	LT&C	
G		7-7/8"	26.4# 29.7#	N80J-55	8310'	LT&C	
T		LINER 5" OD	18#	L80	7642'-12399'	FJ -LINER	
B		2-7/8"	6.5#	L80	11310.60'	SRD.	
G							
PERFS:							
11576-67, 11550-38, 11522-18, 11512-1495'				ID	PSTD	PERFS	FORMATION
				12000'	12000'		
		\$	VENDOR	PKR	S.N. @	EOT @	
				1175.85'-1182.45'	10737'	11165'	
LOCATION				WORK PERFORMED			
SERVICE RIG				Start Time:7:00am Stop time:11:30am			
SUPERVISOR				CHECKED ON WELL PUMPING.			
220-3/4" RODS				Arrived on location 6:35am, and waited on rig crew to arrive.			
PUMP REPAIR				Held safety meeting w/ rig crew, checked well, pumping good. Checked pump			
VAC TRUCK				action , OK.			
				Rig down Basic workover rig, and cleaned up location.			
				Release Service Rig.			
				Turned the well over to production to test the well.			
				FINAL REPORT. DROP			
				NO CHANGES ON TUBING LANDING DETAIL.			
				</			

FV-3



DATE: 3/2/2012			DAILY WORKOVER / COMPLETION REPORT			ISO	
WELL NAME & NO.					FIELD		
TRIPLE N.WELL#FV-3					TRIPLE "N"		
SEC.		TWP	RGE	COUNTY	STATE		
				ANDREWS	TX		
AFE NO.		W.I. 100%		GROSS AFE			
PO# N-15785...							
JOB DESCRIPTION:					SUPPLEMENT 1		
FISH PARTED RODS.					TOTAL GROSS AFE		
		SIZE	WT.	GRADE	DEPTH	THREAD	
C	S	13-3/8"	48#	H-40	284	ST&C	
		9-5/8"			4,044	LT&C	
		7-7/8"	26.4#,29.7#	N80,J-55	8310'	LT&C	
T	B	LINER 5"OD	18#	L80	7642'-12399'	FJ -LINER	
		2-7/8"	6.50#	L80		8RD.	
PERFS:							
11495-11512' 11580-11550'		TD	PBTD	PERFS	FORMATION		
		12400'	12000'				
	\$	VENDOR	PKR	S.N. @	EOT @	ON-OFF	
LOCATION			11178'	11175'	11310'		
RIG	2800	BASIC -A	WORK PERFORMED				
SUPERVISOR			Start Time:7am Stop time:6:00pm				
PUMP TRUCK			OW, NO PRESSURE.				
			MI and rigged up Basic rig 1215 . Un-beamed , and laid down head. PU and laid				
			down polished rod, sucker rods parted deep at 3/4" rods.				
			Pooh w/ 202 -7/8" EL rods & 135-3/4" w/ 15' of broken piece. Rod body looking up				
			MU and Sih with overshot , tagged parffin buld up inside 2-7/8" tubing. Unable				
			to get down.				
			Dump 25 gal of diesel down tubing . Worked overshot through to top of fish				
			Latched on fish and laid down 2 rods in clear, closed well in.				
			High wind with sand storm				
			SDFN.				
DAILY COST	2,800		ACCIDENTS: -0-				
PRIVIOUS COST	0		REPORT BY: Hadi				
TOTAL COST	2,800	\$2,800	RIG# Basic rig 1215		PHONE: 361-649-7340		

DATE: 3/3/2012			DAILY WORKOVER / COMPLETION REPORT			ISO	
WELL NAME & NO.					FIELD		
TRIPLE N.WELL#FV-3					TRIPLE "N"		
SEC.		TWP	RGE	COUNTY		STATE	
				ANDREWS		TX	
AFE NO.		W.L 100%		GROSS AFE			
PO# N-15785...							
JOB DESCRIPTION: FISH PARTED RODS.					SUPPLEMENT 1		
					TOTAL GROSS AFE		
		SIZE	WT.	GRADE	DEPTH	THREAD	
C	S	G	13-3/8"	48#	H-40	284	ST&C
			9-5/8"			4,044	LT&C
			7-7/8"	26.4#/29.7#	N80,J-55	8310'	LT&C
T	B	G	LINER 5"OD	18#	L80	7642'-12399'	FJ-LINER
			2-7/8"	6.50#	L80		8RD.
PERFS:							
11495-11512' 11580-11550'		TD		PBTD	PERFS	FORMATION	
		12400'		12000'			
	\$	VENDOR	PKR	S.N. @	EOT @	ON-OFF	
LOCATION			11178'	11175'	11310'		
RIG	3200	BASIC -A	WORK PERFORMED				
SUPERVISOR			Start Time:7am Stop time:6:00pm				
PUMP TRUCK			OW. NO PRESSURE.				
			Continued pulling rods and over shot . Finished out hole recovered 48 more				
			parted rods out below overshot. Thick paraffine on the rods.				
			Sort out sucker rods, changed grapple and trip back in hole with overshot and				
			and tapered string rods. Tagged parted rods, and latched on fish.				
			Work and pulled on rods to release pump without success. Pump and				
			weight bars appear to stuck with formation solids. Worked to release pump				
			and unable to move pump. "Stuck Pump"				
			Closed well in. SDFN.				
			No progress on Sunday.				
DAILY COST	3,200		ACCIDENTS: -0-				
PRIVIOUS COST	2,800		REPORT BY: Hadi				
TOTAL COST	6,000	\$6,000	RIG# Basic rig 1215		PHONE: 361-649-7340		

<b>DATE:</b> 3/5/2012			<b>DAILY WORKOVER / COMPLETION REPORT</b>			<b>ISO</b>	
WELL NAME & NO.						FIELD	
<b>TRIPLE N.WELL#FV-3</b>						<b>TRIPLE "N"</b>	
SEC.			TWP	RGE	COUNTY <b>ANDREWS</b>	STATE <b>TX</b>	
AFE NO. <b>PO# N-15785...</b>			W.I. 100%		GROSS AFE		
JOB DESCRIPTION: FISH PARTED RODS.					SUPPLEMENT 1		
					TOTAL GROSS AFE		
		SIZE	WT.	GRADE	DEPTH	THREAD	
C	S	13-3/8"	48#	H-40	284	ST&C	
		9-5/8"			4,044	LT&C	
		7-7/8"	26.4#,29.7#	N80,J-55	8310'	LT&C	
T	B	LINER 5"OD	18#	L80	7642'-12399'	FJ -LINER	
		2-7/8"	6.50#	L80		8RD.	
PERFS:							
11495-11512' 11580-11550'			TD	PBTD	PERFS	FORMATION	
			12400'	12000'			
	\$	VENDOR	PKR	S.N. @	EOT @	ON-OFF	
LOCATION			11178'	11175'	11310'		
RIG	3500	BASIC -A	WORK PERFORMED				
SUPERVISOR			Start Time:7am Stop time:6:00pm				
PUMP TRUCK			OW, NO PRESSURE.				
			Con'd working rods to free pump, pull and drag pup up the hole . Pulled				
			51 rods. Pump stop moving up the hole . Could have solids and paraffine				
			above wt.bars and pump.				
			Continued working rods and dumping diesel down tubing. Rods parted high				
			pooh with 201- 7/8" rods and 147-3/4" rods and 15 ft of rod very flat due to				
			corrosion attack. (rods parted above overshot)				
			Closed Well in. Will attempt to release packer. Parted rods too flat for				
			overshot to catch.				
DAILY COST	3,500		ACCIDENTS: -0-				
PRIVIOUS COST	6,000						
TOTAL COST	9,500	\$9,500	RIG# Basic rig 1215			REPORT BY: Hadi	
						PHONE: 361-649-7340	

DATE: 3/6/2012			DAILY WORKOVER / COMPLETION REPORT			ISO	
WELL NAME & NO.					FIELD		
TRIPLE N.WELL#FV-3					TRIPLE "N"		
SEC.		TWP	RGE	COUNTY		STATE	
				ANDREWS		TX	
AFE NO.		W.I. 100%			GROSS AFE		
PO# N-15785...							
JOB DESCRIPTION:					SUPPLEMENT 1		
FISH PARTED RODS. Hole in tubing string					TOTAL GROSS AFE		
		SIZE	WT.	GRADE	DEPTH	THREAD	
C	S	G	13-3/8"	48#	H-40	284	ST&C
			9-5/8"			4,044	LT&C
			7-7/8"	26.4#,29.7#	N80,J-55	8310'	LT&C
T	B	G	LINER 5"OD	18#	L80	7642'-12399'	FJ -LINER
			2-7/8"	6.50#	L80		8RD.
PERFS:							
11495-11512' 11580-11550'		TD	PBDT	PERFS	FORMATION		
		12400'	12000'				
\$		VENDOR	PKR	S.N. @	EOT @	ON-OFF	
LOCATION							
RIG		3700	BASIC	-A	WORK PERFORMED		
SUPERVISOR					Start Time:7am Stop time:6:00pm		
PUMP TRUCK					OW, NO PRESSURE.		
					N/D wellhead,N/U bop's. Released ArrowSet 1-X packer and start out hoe		
					with tubing and rods inside.		
					Pooh checking and standing back tubing string. Laid down 5 joints with		
					corrosion holes. Pulled tubing to rods, Worked rods free, and pooh with 3/4"		
					rods, wt.bars, and laid down pump. Solid Build up around cups.		
					Finished pooh with 344 jts tubing, S/N, 14 jts tubing and Arrow Set 1-x packer.		
					1 joint had long rod wear split, 4 joints had External, and internal corrosion		
					holes. Laid down bad joints in singles.		
					Closed well in. SDFN.		
					Will check and re-test equipment to run back in hole.		
DAILY COST		3,700			ACCIDENTS: -0-		
PRIVIOUS COST		9,500			REPORT BY: Hadi		
TOTAL COST		13,200	\$13,200	RIG# Basic rig 1215	PHONE: 361-649-7340		



DATE: 3/7/2012 W			DAILY WORKOVER / COMPLETION REPORT			ISO	
WELL NAME & NO. <b>TRIPLE N.WELL#FV-3</b>					FIELD <b>TRIPLE "N"</b>		
SEC.		TWP	RGE	COUNTY <b>ANDREWS</b>		STATE <b>TX</b>	
AFE NO. <b>PO# N-15785...</b>		W.L 100%		GROSS AFE			
JOB DESCRIPTION: <b>FISH PARTED RODS. Hole in tubing string</b>					SUPPLEMENT 1		
					TOTAL GROSS AFE		
		SIZE	WT.	GRADE	DEPTH	THREAD	
C	S	13-3/8"	48#	H-40	284	ST&C	
		9-5/8"			4,044	LT&C	
		7-7/8"	26.4#,29.7#	N80,J-55	8310'	LT&C	
T	B	LINER 5"OD	18#	L80	7642'-12399'	FJ -LINER	
		2-7/8"	6.50#	L80		8RD.	
PERFS:							
11495-11512' 11580-11550'			TD	PBTD	PERFS	FORMATION	
			12400'	12000'			
	\$	VENDOR	PKR	S.N. @	EOT @	ON-OFF	
LOCATION							
RIG	4100	BASIC -A	WORK PERFORMED				
SUPERVISOR	400	Hadi -B	Start Time:7am Stop time:6:00pm				
TUBING TEST	0	RAMOS -C	OW, NO PRESSURE.				
PUMP REPAIR	0	Andrews Pump -D					
DOPE, RODS	0	Prod.Specialty -E	Rigged up Ramos tubing testers, Made up, and start in hole with 5" (18#)				
2-7/8" TUBING	0		ArrowSet 1-X packer, 13 joints tubing, 2-7/8" Seating Nipple, tested 2-7/8"				
			production tubing 5000# high, 2000#low.				
			Tested total of 353 joints and found total of 33 joints bad with external,internal				
			corrosion holes and splits. Laid down bad joint.				
			Tested in hole: Packer, 13 joints 2-7/8" tubing, and 320 joints to 10016'.				
			Closed well in for day light. Upper 12 joints have praffine build ups.				
			will continue testing pipe in hole.				
			NEED 33 JTS OF NEW TUBING TO TARGET DEPTH.				
DAILY COST	4,500		ACCIDENTS: -0-				
PRIVIOUS COST	13,200		REPORT BY: Hadi				
TOTAL COST	17,700	\$17,700	RIG# Basic rig 1215		PHONE: 361-649-7340		

DATE: 3/9/2012    Frd.			DAILY WORKOVER / COMPLETION REPORT			ISO	
WELL NAME & NO. <b>TRIPLE N.WELL#FV-3</b>					FIELD <b>TRIPLE "N"</b>		
SEC.		TWP	RGE	COUNTY <b>ANDREWS</b>	STATE <b>TX</b>		
AFE NO. <b>PO# N-15785...</b>		W.I. 100%		GROSS AFE			
JOB DESCRIPTION: <b>FISH PARTED RODS. Hole in tubing string</b>					SUPPLEMENT 1		
					TOTAL GROSS AFE		
		SIZE	WT.	GRADE	DEPTH	THREAD	
C  S  G		13-3/8"	48#	H-40	284	ST&C	
		9-5/8"			4,044	LT&C	
		7-7/8"	26.4#,29.7#	N80,J-55	8310'	LT&C	
T  B  G		LINER 5"OD	18#	L80	7642'-12399'	FJ -LINER	
		2-7/8"	6.50#	L80	11007'	8RD.	
PERFS:							
11495-11512'    11580-11550'		TD	PBTD	PERFS	FORMATION		
		12400'	12000'				
	\$	VENDOR	PKR	S.N. @	EOT @	ON-OFF	
LOCATION			11007'		11013'		
RIG	3800	BASIC -A	WORK PERFORMED				
SUPERVISOR	400	Hadi -B	Start Time:7am    Stop time:6:00pm				
TUBING TEST	2000	RAMOS -C	OW, NO PRESSURE. Temp 36 deg. W/mist of rain and trace of snow.				
PUMP REPAIR	0	Andrews Pump -D	Ramos thg testers re-attempt to test 11 sands in derrick , tools would not go				
DOPE, RODS	0	Prod.Specialty -E	through. (unable to find hot oilers)				
2-7/8" TUBING	0	- F	Rig down tubing testers, moved off location. THH with 11 stands, pooh and laid				
Packer	3200	Weatherford -G	down 22 joints in singles.				
			Unloaded 35 joints new tubing (total of 55 jts). Finished GIH with Arrowset 1-x				
			packer, 13 joints tubing, Seating nipple & 352 joints 2-7/8" tubing . Total of				
			339 joints tubing hole ( top 54 joints new 2-7/8" L80 tubing)				
			Set Arrowset 1-x packer at 11007' w/18000 lb down on packer . Picked up and				
			pulled 12000 lb tension on packer. (packer set and hung on Tension)				
			N/D and N/U tree . Removed rig floor and cleared off location. Sort out rods				
			and handling tools. Closed well in.				
			SDFN.				
			Will run rods.				
			Note: 5-1/2" Liner is not in good cond. Inorder to avoid Future fishing cost				
			need to Run 2-3/8" x 2-7/8" string in the hole.				
DAILY COST	9,400		ACCIDENTS: -0-				
PRIVIOUS COST	17,700		REPORT BY: Hadi				
TOTAL COST	27,100	\$27,100	RIG# Basic rig 1215		PHONE: 361-649-7340		



DATE: 3/12/2012    Mond			DAILY WORKOVER / COMPLETION REPORT			ISO	
WELL NAME & NO. <b>TRIPLE N.WELL#FV-3</b>					FIELD <b>TRIPLE "N"</b>		
SEC.		TWP	RGE	COUNTY <b>ANDREWS</b>	STATE <b>TX</b>		
AFE NO. <b>PO# N-15785...</b>		W.I. 100%		GROSS AFE			
JOB DESCRIPTION: <b>FISH PARTED RODS &amp; Hole in tubing string</b>					SUPPLEMENT 1		
					TOTAL GROSS AFE		
		SIZE	WT.	GRADE	DEPTH	THREAD	
C  S  G		13-3/8"	48#	H-40	284	ST&C	
		9-5/8"			4,044	LT&C	
		7-7/8"	26.4#,29.7#	N80,J-55	8310'	LT&C	
T  B  G		LINER 5"OD	18#	L80	7642'-12399'	FJ -LINER	
		2-7/8"	6.50#	L80	11007'	8RD.	
		top 54 joints are new 2-7/8" L80 pipe.					
PERFS:							
11495-11512' 11580-11550'			TD	PBTD	PERFS	FORMATION	
			12400'	12000'			
	\$	VENDOR	PKR	S.N. @	EOT @	ON-OFF	
LOCATION			11007'		11013'		
RIG	2100	BASIC -A	WORK PERFORMED				
SUPERVISOR	400	Hadi -B	Start Time:7am    Stop time:1:00pm				
TUBING TEST	0	RAMOS -C	OW, NO PRESSURE.				
PUMP REPAIR	850	Andrews Pump -D	Finished GIH with 2-1/2"x1-1/2"x22' inset pump on 8 wt.bars, 235-3/4" steel				
DOPE, RODS	320	Prod.Specialty -E	sucker rods, 200-7/8" steel sucker rods. Spaced out with 12' ponny rods and				
2-7/8" TUBING	0	-F	polished rod.				
Packer	0	Weatherford -G	H.W.O.B. Put well on pumping. Checked pump action Ok.				
BOP's	0	CAVALOZ -H	filled up tubing with 20 bbl fresh water and re-checked pump action Ok.				
SLIPS	0	CAGEL -I	tested tubing and pump 600 psig. Ok.				
			Rigged down Basic rig 1215 and cleaned up location.				
			Turned the well over to production. Moved off location.				
			Note: 5-1/2" & 7-7/8" casing is not in good cond. Inorder to avoid Future fishing costs need to Run 2-3/8" x 2-7/8" string in the hole.				
DAILY COST	3,670		ACCIDENTS: -0-				
PRIVOUS COST	29,900		REPORT BY: Hadi				
TOTAL COST	33,570	\$33,570	RIG# Basic rig 1215		PHONE: 361-649-7340		

DATE: 3/30/2012		DAY 1		DAILY WORKOVER / COMPLETION REPORT		ISO	
WELL NAME & NO.				FIELD			
TRIPLE N.WELL#FV-3				TRIPLE "N"			
SEC.		TWP	RGE	COUNTY	STATE		
				ANDREWS	TX		
AFE NO.		W.I. 100%		GROSS AFE			
NO AFE							
JOB DESCRIPTION:				SUPPLEMENT 1			
PULL RODS & PUMP & RELEASE PACKER .CIR.WELL CLEAN & RESET PACKER.				TOTAL GROSS AFE			
		SIZE	WT.	GRADE	DEPTH	THREAD	
C	S	13-3/8"	48#	H-40	284	ST&C	
		9-5/8"			4,044	LT&C	
		7-7/8"	26.4#,29.7#	N80,J-55	8310'	LT&C	
T	B	LINER 5"OD	18#	L80	7642'-12399'	FJ -LINER	
		2-7/8"	6.50#	L80		8RD.	
PERFS:							
11495-11512' 11580-11550'		TD	PBTD	PERFS	FORMATION		
		12400'	12000'				
	\$	VENDOR	PKR	S.N. @	EOT @	ON-OFF	
LOCATION			11178'	11175'	11310'		
RIG	4060	CHOCTAW	WORK PERFORMED				
SUPERVISOR	600	AMERICO	PUMP WELL UP TO 700# HELD GOOD FOR 10 MIN.LEFT CASING OPEN 0#				
PUMP TRUCK	965	ONE SOURCE	MOVE IIN WORKOVER SET MATTING BOARD.RIG UP ON WELL. LAY DOWN				
VAC TRUCK	400	ONE SOURCE	HORSEHEAD.UNSEATED PUMP LAY DOWN POLISH ROD.NIPPLE UP ROD				
MATT BOARDS	500	S & A OILFIELD	BOP & RIG UP FLOOR & TONG. PULL OUT PONY RODS. NEED DIFFERENT				
BOP	250	S & T ENTERPRISES	TOOL TO BREAK OUT EL ROD. GOT CALL TO SHUT DOWN OPERATION.				
PUMP REPAIR		ANDREWS PUMP	WENT BACK WITH PONY RODS &NIPPLE DOWN BOP. PICK UP POLISH				
			ROD & SEAT PUMP. HUNG OFF HORSEHEAD &POLISH ROD. RIG UP				
			PUMP TRUCK TO TUBING PUMP 15 BBLS BEFORE PRESSURE UP TO 550#				
			BLEW DOWN TO 0# STROKE PUMP & SET ALL WEIGHT BACK DOWN ON				
			PUMP .PRESSURE BACK UP TO 550# & BLEW OFF TO 0 #.				
			TUBING GOES ON VACCUUM .LAY DOWN HORSEHEAD & POLISH ROD.				
			NIPPLE UP BOP & RIG UP FLOOR & TONGS .P.O.O.H. WITH PONY RODS				
			198-7/8" RODS ,219 -3/4" RODS ,8- WEIGHT BAR & PUMP				
			SDFN				
			NOTE :ALL 198 -3/4 "RODS HAD PARFFIN BUILT UP. SENT PUMP IN FOR				
			REPAIR.				
DAILY COST	6,775		ACCIDENTS: -0-				
PRIVIOUS COST	0		REPORT BY: DONNIE MAMEROW				
TOTAL COST	6,775		PHONE: 361-771-8443				

DATE: 3/31/2012		DAY 2		DAILY WORKOVER / COMPLETION REPORT		ISO	
WELL NAME & NO.				FIELD			
TRIPLE N.WELL#FV-3				TRIPLE "N"			
SEC.		TWP	RGE	COUNTY	STATE		
				ANDREWS	TX		
AFE NO.		W.I. 100%		GROSS AFE			
NO AFE							
JOB DESCRIPTION:				SUPPLEMENT 1			
PULL RODS & PUMP & RELEASE PACKER .CIR.WELL CLEAN & RESET PACKER.				TOTAL GROSS AFE			
		SIZE	WT.	GRADE	DEPTH	THREAD	
C	S	13-3/8"	48#	H-40	284	ST&C	
		9-5/8"			4,044	LT&C	
		7-7/8"	26.4#,29.7#	N80,J-55	8310'	LT&C	
T	B	LINER 5"OD	18#	L80	7642'-12399'	FJ-LINER	
		2-7/8"	6.50#	L80		8RD.	
PERFS:							
11495-11512' 11580-11550'		TD	PBTD	PERFS	FORMATION		
		12400'	12000'				
	\$	VENDOR	PKR	S.N. @	EOT @	ON-OFF	
LOCATION			11178'	11175'	11310'		
RIG	3480	CHOCTAW	WORK PERFORMED				
SUPERVISOR	600	AMERICO	THIS MORNING WENT IN HOLE WITH 2-1/2" X 1-1/2" X 24' BHD PUMP				
PUMP TRUCK	940	ONE SOURCE	8- 1-1/2" WEIGHT BARS, 219 -3/4", 198-7/8" RODS,1-2",1-4",1-6" PONY RODS ,NIPPLE DOWN				
VAC TRUCK		ONE SOURCE	BOP,RIGDOWN TONG & FLOOR. HUNG OFF HORSEHEAD,PICK POLISH				
MATT BOARDS		S & A OILFIELD	ROD & STUFFING BOX. SEAT PUMP &PICK OFF BOTTOM 16".TIE ONE				
BOP		S & T ENTERPRISES	SOURCE PUMP TRUCK TO TUBING & LEFT CASING OPEN. PUMP 18 BBL TO				
PUMP REPAIR	356	ANDREWS PUMP	PRESSURE UP 550#. STILL BLEW OFF TO 0# STROKE PUMP WHILE PUMPING				
MISC.CONN,S	155	ANDREWS PUMP	WITH PUMP TRUCK ANOTHER 15 BBLs AT 350# TAKING WATER. PUMP INTO				
			CASING 40 BBL NO BLOW ON TUBING. SET ALL ROD WEIGHT DOWN ON				
			PUMP & PUMP UP TO 550# STILL BLED OFF. UP SEAT PUMP & PUMP 20 BBL				
			DOWN TUBING & GOT RETURN ON CASING.PURE CRUDE OIL. SHUT IN				
			CASING. AFTER 5 MIN. CASING STILL BLOW OIL. CHECK TUBING ON				
			ON VACCUM,SEAT PUMP& HUNG OFF HORSEHEAD,PICK OFF BOTTOM 16"				
			HUNG OFF POLISH ROD & PUT UNIT ON.PUMP FOR 40 MIN .TUBING &				
			CASING ON VACCUM. SDFD.				
DAILY COST	5,531		ACCIDENTS: -0-				
PRIVOUS COST	6,775		REPORT BY: DONNIE MAMEROW				
TOTAL COST	12,306		RIG# CHOCTAW PHONE: 361-771-8443				

DATE: 4-2/2012		DAY 3		DAILY WORKOVER / COMPLETION REPORT		ISO	
WELL NAME & NO.				FIELD			
TRIPLE N.WELL#FV-3				TRIPLE "N"			
SEC.		TWP	RGE	COUNTY	STATE		
				ANDREWS	TX		
AFE NO.		W.I. 100%		GROSS AFE			
NO AFE							
JOB DESCRIPTION:				SUPPLEMENT 1			
PULL RODS & PUMP & RELEASE PACKER .CIR.WELL CLEAN & RESET PACKER.				TOTAL GROSS AFE			
		SIZE	WT.	GRADE	DEPTH	THREAD	
C	S	13-3/8"	48#	H-40	284	ST&C	
		9-5/8"			4,044	LT&C	
		7-7/8"	26.4#,29.7#	N80,J-55	8310'	LT&C	
T	B	LINER 5"OD	18#	L80	7642'-12399'	FJ -LINER	
		2-7/8"	6.50#	L80		8RD.	
PERFS:							
11495-11512' 11580-11550'		TD	PBTD	PERFS	FORMATION		
		12400'	12000'				
	\$	VENDOR	PKR	S.N. @	EOT @	ON-OFF	
LOCATION			11007'		11013'		
RIG	3770	CHOCTAW	WORK PERFORMED				
SUPERVISOR	600	AMERICO	THIS MORNING LAY DOWN HORSEHEAD & POLISH ROD WITH STUFFING				
PUMP TRUCK		ONE SOURCE	BOX .RIG UP ROD BOP & RIG UP FLOOR & TONG P.O.O.H WITH 1-2',1-4',1-6'				
VAC TRUCK		ONE SOURCE	PONY RODS. 198 -7/8"RODS,219-3/4"RODS,8-1-1/2"WEIGHT BARS & PUMP.				
MATT BOARDS		S & A OILFIELD	RIG DOWN FLOOR & TONG.NIPPLE DOWN ROD BOP & PICK UP ON				
BOP	920	S & T ENTERPRISES	WELLHEAD TO SET SLIP.PICK UP 72,000# STRING WEIGHT PULL ONE				
PUMP REPAIR		ANDREWS PUMP	1 JT .PACKER WAS NOT SET.NIPPLE UP B.O.P. RIG UP FLOOR & TONG				
MISC.CONN,S		ANDREWS PUMP	P.O.O.H. WITH 343JTS. OF 2-7/8" TUBING SEAT NIPPLE. 13 JTS.-2-7/8" TUBING				
			PACKER.				
			SDFN				
			NOTE LAY OUT 1JT WITH LOTS OF BIG PTS. NEED TO CHANGE OUT 25				
			BAD COLLARS.				
DAILY COST	5,290		ACCIDENTS: -0-				
PRIVIOUS COST	12,306		REPORT BY: DONNIE MAMEROW				
TOTAL COST	17,596		RIG# CHOCTAW				
			PHONE: 361-771-8443				

DATE: 4-3-2012		DAY 4		DAILY WORKOVER / COMPLETION REPORT		ISO	
WELL NAME & NO.				FIELD			
TRIPLE N.WELL#FV-3				TRIPLE "N"			
SEC.		TWP	RGE	COUNTY	STATE		
				ANDREWS	TX		
AFE NO.		W.I. 100%		GROSS AFE			
NO AFE							
JOB DESCRIPTION:				SUPPLEMENT 1			
PULL RODS & PUMP & RELEASE PACKER .CIR.WELL CLEAN & RESET PACKER.							
				TOTAL GROSS AFE			
		SIZE	WT.	GRADE	DEPTH	THREAD	
C	S	13-3/8"	48#	H-40	284	ST&C	
		9-5/8"			4,044	LT&C	
		7-7/8"	26.4#,29.7#	N80,J-55	8310'	LT&C	
T	B	LINER 5"OD	18#	L80	7642'-12399'	FJ -LINER	
		2-7/8"	6.50#	L80		SRD.	
PERFS:							
11495-11512' 11580-11550'			TD	PBTD	PERFS	FORMATION	
			12400'	12000'			
	\$	VENDOR	PKR	S.N. @	EOT @	ON-OFF	
LOCATION			11011'		11020'		
RIG	4060	CHOCTAW	WORK PERFORMED				
SUPERVISOR	600	AMERICO	THIS MORNING RIG UP RAPID TUBING TESTER .WENT IN HOLE WITH				
PUMP TRUCK	940	ONE SOURCE	ARROW SET 1-X PACKER & 13 JTS .SEAT NIPPLE,343 JTS. OF 2-7/8" TUBING				
VAC TRUCK	600	ONE SOURCE	PRESSURE TESTED ALL TO 6000#.RIG DOWN TUBING TESTER. RIG UP ONE				
MATT BOARDS	500	S & A OILFIELD	SOURCE PUMP TRUCK PUMP 21BBL DOWN CASING WELL CIR. OUT OF				
BOP		S & T ENTERPRISES	TUBING. TIE IN VACCUM TO TUBING TO RECOVER RETURN . PUMP 40 BBL				
PUMP REPAIR	150	ANDREWS PUMP	DOWN CASING . RIG DOWN FLOOR & TONG. NIPPLE DOWN BOP.				
MISC.CONN,S	3040	ANDREWS PUMP	SET PACKER 11011' WITH 19,000# COMPRESSION .PULL SET DOWN SEVERAL				
TUBING TESTER	2500	RAPID	TIMES PULL UP TO 14000# INTENSION . PULL UP 22,000# TO SET SLIP				
CHEMICAL	642	ENDURA	WEIGHT 94000#. PUT TREE ON REMOVE SLIP SET DOWN WITH 14000#				
TRUCKING MATT	200	CHOCTAW	INTENSION. POUR 25 GAL OF ENDURA CHEMICAL DOWN CASING. PUMP				
PACKER & HAND	2042	PEAK	3BBLS CASING PRESSURE TO 500# HELD GOOD. TUBING OPEN NO BLOW.				
			SDFN				
			NOTE : NUMBER 319 JT HAD HOLE IN IT. NUMBER 184 JT. SPLIT IN TUBING				
			AFTER PRESSURE UP TO 4000#. ALSO REPLACE 35 COLLARS ON TUBING.				
DAILY COST	15,274		ACCIDENTS: -0-				
PRIVOUS COST	17,596		REPORT BY: DONNIE MAMEROW				
TOTAL COST	32,870		RIG# CHOCTAW PHONE: 361-771-8443				



DATE: 4-4-2012		DAY 5		DAILY WORKOVER / COMPLETION REPORT		ISO	
WELL NAME & NO.				FIELD			
TRIPLE N.WELL#FV-3				TRIPLE "N"			
SEC.		TWP	RGE	COUNTY		STATE	
				ANDREWS		TX	
AFE NO.		W.I. 100%		GROSS AFE			
NO AFE							
JOB DESCRIPTION:				SUPPLEMENT 1			
PULL RODS & PUMP & RELEASE PACKER .CIR.WELL CLEAN & RESET PACKER.				TOTAL GROSS AFE			
		SIZE	WT.	GRADE	DEPTH	THREAD	
C	S	G	13-3/8"	48#	H-40	284	ST&C
			9-5/8"			4,044	LT&C
			7-7/8"	26.4# ,29.7#	N80,L-55	8310'	LT&C
T	B	G	LINER 5"OD	18#	L80	7642'-12399'	FJ -LINER
			2-7/8"	6.50#	L80		8RD.
PERFS:							
11495-11512' 11580-11550'				TD	PBTD	PERFS	FORMATION
				12400'	12000'		
		\$	VENDOR	PKR	S.N. @	EOT @	ON-OFF
LOCATION			11011'		11020'		
RIG		3190	CHOCTAW	WORK PERFORMED			
SUPERVISOR		300	AMERICO	THIS MORNING NIPPLE UP BOP FOR RODS.RIG UP FLOOR & TONG. WENT			
PUMP TRUCK		585	ONE SOURCE	IN HOLE WITH 2-1/2" x 1-1/2" x 24' BHD PUMP 12- 1-1/2" WEIGHT BARS.			
VAC TRUCK			ONE SOURCE	BAR ,215 -3/4" RODS,198 -7/8" RODS 1-4', 2-6' PONY RODS.RIG DOWN TONG			
MATT BOARDS			S & A OILFIELD	& FLOOR NIPPLE DOWN BOP .PICK UP POLISH ROD & STUFFING BOX,SEAT PUMP			
BOP			S & T ENTERPRISES	RIG UP PUMP TO TUBING PUMP 13 BBLs TO PRESSURE UP TO 550# HELD GOOD&			
PUMP REPAIR			ANDREWS PUMP	CASING OPEN TO FLOW,HUNG OFF HORSEHEAD PICK OFF BOTTOM 16"			
MISC CONNS			ANDREWS PUMP	HUNG OFF POLISH. TURN UNIT ON TOOK 8 STROKE TO PUMP UP TUBING			
TUBING TESTER			RAPID	TO 550# HELD GOOD .PUTIN NEW CHECK VALVE& BACK PRESSURE VALVE			
CHEMICAL			ENDURA	ON FLOWLINE .SET PRESSURE AT 175# RIG DOWN WORKOVER & MOVE TO YARD.			
TRUCKING MATT			CHOCTAW				
PACKER & HAND			PEAK				
BACKHOE		400	JRC	FINAL REPORT STILL NEED AFE			
DAILY COST		4,475		ACCIDENTS: -0-			
PRIVIOUS COST		32,870		REPORT BY: DONNIE MAMEROW			
TOTAL COST		37,345	RIG# CHOCTAW	PHONE: 361-771-8443			

POLISH ROD  
1-4' PONY ROD  
2-6' PONY ROD  
198-7/8" RODS  
215 -3/4" RODS  
2-1/2" X 1-1/2" X 24' BHD PUMP

TUBING DETAIL  
TREE FLANGE 1500 WITH COMBIATON  
343 JOINTS OF 2-7/8" TUBING  
SEAT NIPPLE  
13 JOINTS OF 2-7/8" TUBING  
ARROW SET 1-X PACKER AT 11011' WITH  
TO GET SLIP ON ,WEIGHT 96000#