

**RAILROAD COMMISSION OF TEXAS
OIL AND GAS DIVISION**

42.003 00599
Form 2
Well Record

File No.

Operator.....**Big "6" Drlg. Co.**.....Address.....**217 Oil & Gas Bldg. Houston 2, Tex.**

County.....**Andrews**.....Survey.....**University**.....Block No.**1**.....Sec. No.**13**

Lease Name.....**University**.....Well No.**2 UT**.....Elevation.....**3100**
(Above Sea Level)

Name of Field in which well is located.....**Andrews "South" "Devonian"**

Form 1 (Notice of Intention to Drill) Was Filed in Name of.....**Big "6" Drlg. Co.**

Is this a NEW WELL?.....**Yes**.....DEEPENING?.....or a WORK-OVER?.....

If this is a NEW WELL, show when drilling commenced and when drilling was completed. **4-12-58, 7-16-58**

If this is a PLUG-BACK or DEEPENING operation to a different reservoir, show when work-over commenced and when completed.

(Work-Over) Commenced....., 19.....(Work-Over) Completed....., 19.....
(Drilling) (Drilling)

Correspondence regarding this well should be sent to: Name.....**Big "6" Drlg. Co.**.....Address.....**217 Oil & Gas Bldg. Houston 2, Tex.**

Has an allowable been assigned to this well?.....

SIZE	PUT IN WELL		PULLED OUT		LEFT IN WELL		PACKERS AND SHOES
	Ft.	In.	Ft.	In.	Ft.	In.	
20	32				32		
13 3/8	480				480		7" Halliburton Flt.
9 5/8	4999				4999		Shoe
7	12635				12635		7" Halliburton Flt.
2 3/8	10951				10951		Collar.

Initial Production of Gas—Volume.....**487**.....MCF
24 hrs. Pressure.....**975**.....lbs. per square inch

Initial Production of Oil: Barrels.....**297**

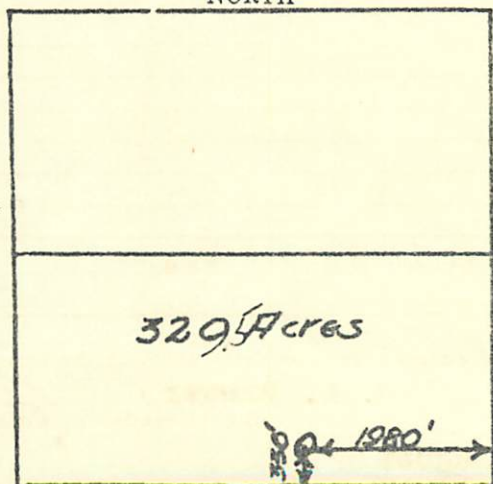
Initial Production of Distillate: Barrels.....

Is this an OIL well?.....**Yes**....., a GAS well?....., or a Dry HOLE?.....

**DESCRIPTION OF PROPERTY
NORTH**

GENERAL REMARKS

WEST



330' From South Line
1980' From East Line
Univ. Lds. Sec 13, Blk. 1.
Andrews, Co.
320 Acre Lse.

Show All Formations, Especially All Sands and Character and Contents Thereof

Method of shutting off water.....**Halliburton**.....Is water completely shut off?.....**Yes**.....
Amount of water with oil.....per cent.....

Subscribed and sworn to before me this 4th day of August, 1958

f. August 19 58
J. R. Todd
Notary Public
Ector County, Texas.

RAILROAD COMMISSION OF TEXAS OIL AND GAS DIVISION

42-003-00599

Form 2
Well Record

File No.

Operator Big "6" Drilling Co. Address 217 Oil & Gas Bldg. Houston, Tex

County Andrews Survey University Block No. 1 Sec. No. 13

Lease Name University # 10850 Well No. 2LT Elevation 3100'
(Above Sea Level)

Name of Field in which well is located Pasken-Allenberger

Form 1 (Notice of Intention to Drill) Was Filed in Name of Big "6" Drlg. Co.

Is this a NEW WELL? Yes DEEPENING? _____ or a WORK-OVER? _____

If this is a NEW WELL, show when drilling commenced and when drilling was completed. 4-12-58, 7-16-58

If this is a PLUG-BACK or DEEPENING operation to a different reservoir, show when work-over commenced and when completed.

(Work-Over) Commenced _____, 19____ (Work-Over) Completed _____, 19____
(Drilling) (Drilling)

Correspondence regarding this well should be sent to: Name Big "6" Drlg. Co. Address 217 Oil & Gas Bldg. Houston 2, Tex.

Has an allowable been assigned to this well? _____

SIZE	PUT IN WELL		PULLED OUT		LEFT IN WELL		PACKERS AND SHOES
	Ft.	In.	Ft.	In.	Ft.	In.	
20"	33				33		
13 3/8	480				480		7" Halliburton Flt.
9 5/8"	4999				4999		Shoe
7"	12635				12635		7" Halliburton Flt.
2 3/8	12466				12466		Collar.

Initial Production of Gas—Volume 245 MCF 24 hrs. Pressure 1160 lbs. per square inch

Initial Production of Oil: Barrels 389

Initial Production of Distillate: Barrels _____

Is this an OIL well? Yes, a GAS well? _____, or a Dry HOLE? _____

DESCRIPTION OF PROPERTY NORTH		GENERAL REMARKS
WEST	<p>UNIVERSITY LANDS</p> <p>3295 Acres</p> <p>80' ← 1280' →</p>	330' From South Line
		1980' From East Line
		Sec. 13, Blk. 1
		Andrews County
SOUTH		

FILE IN DUPLICATE WITH DEPUTY SUPERVISOR OF DISTRICT IN WHICH WELL IS LOCATED

Show All Formations, Especially All Sands and Character and Contents Thereof

Method of shutting off water Halliburton Is water completely shut off? Yes
Amount of water with oil _____ per cent _____

Subscribed and sworn to before me this 1 st. day of August, 1958.

Notary Public
County, Texas.